

Mounting the AFS system on SWF compact E series operation box

SWF Sverige AB
László Kádár

Boråsvägen 6A
52010 Gällstad
Sweden
e-mail: laszlo@swfsverige.se



The connector should be placed on the corner marked with the white circle on the picture above.



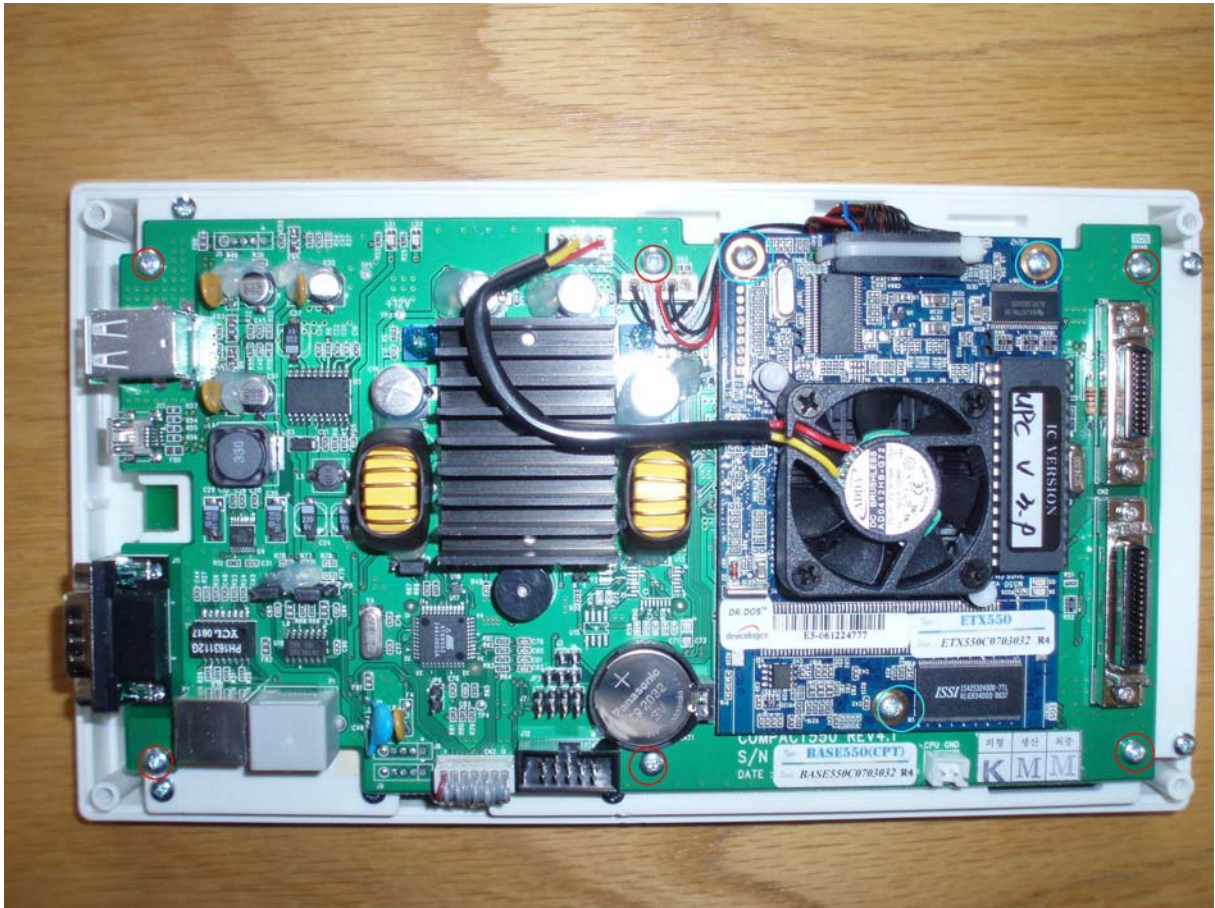
Disconnect the connector, then remove screws marked with red circles, take off the floppy drive. Remove the screws marked with green circles.



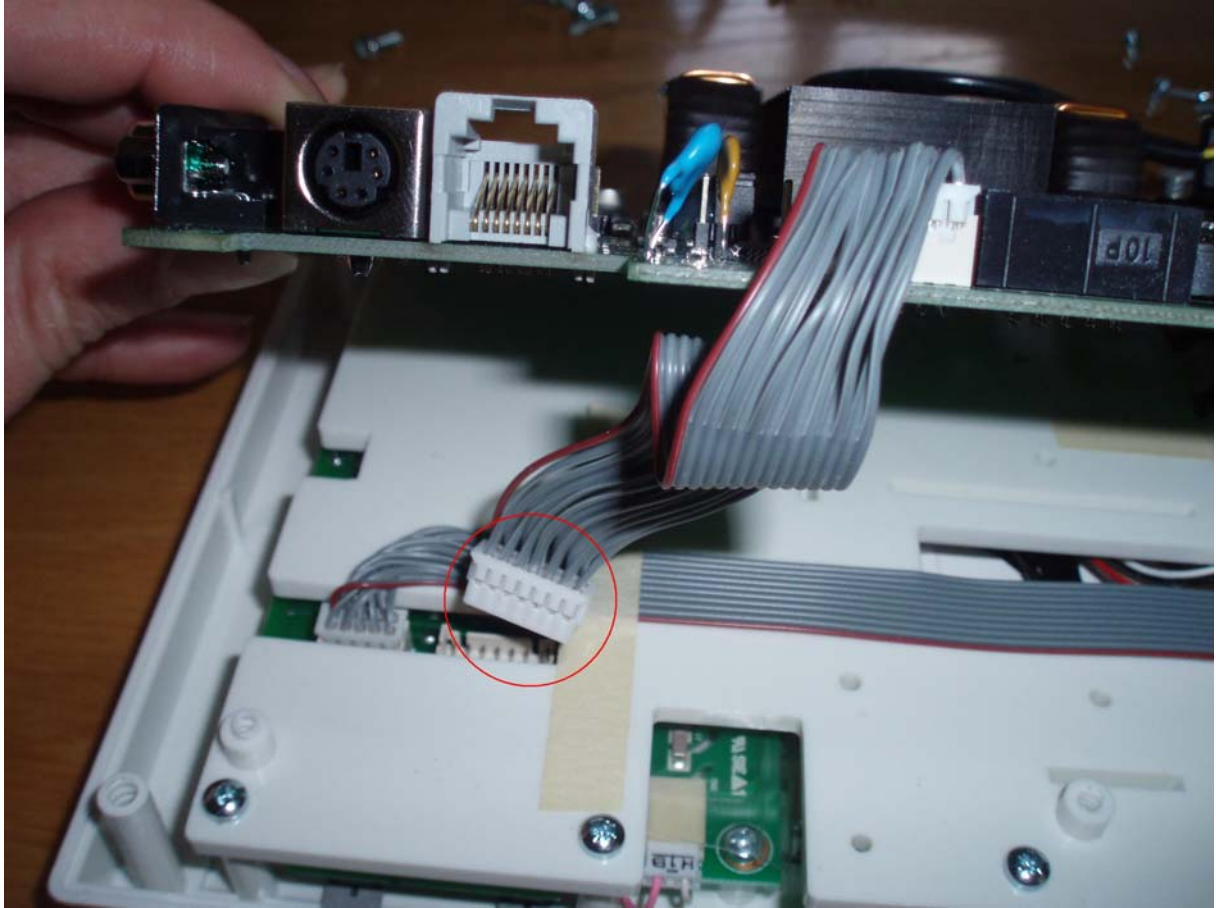
After removing the cover drill a hole as marked with red circle. The cable should go through this hole.



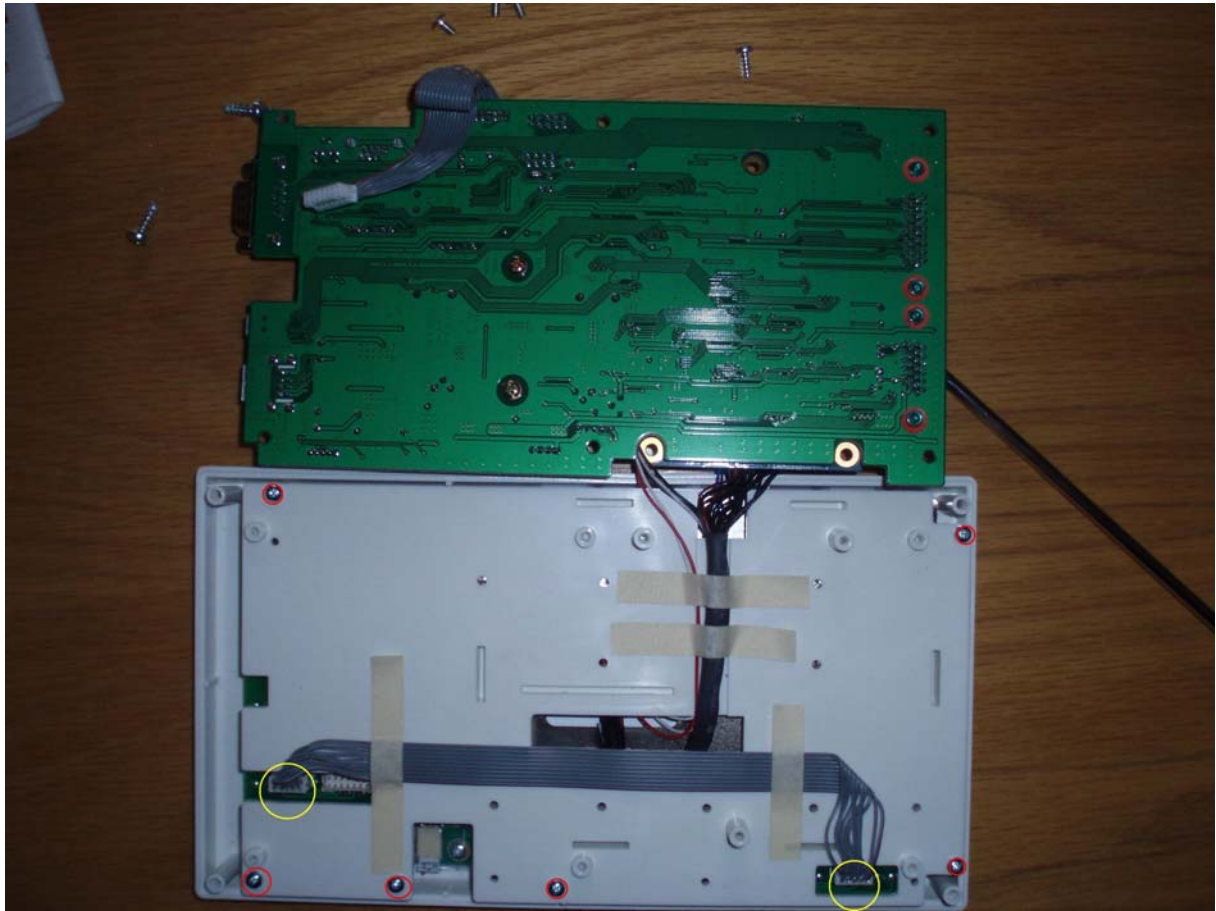
By removing the marked screws you can remove the floppy drive from the box. Now you can make a hole for the connector as showed on pict 1. Fix the connector, rebuild the floppy drive into the box. Guide the cable through the hole on the other cover part. (from top)



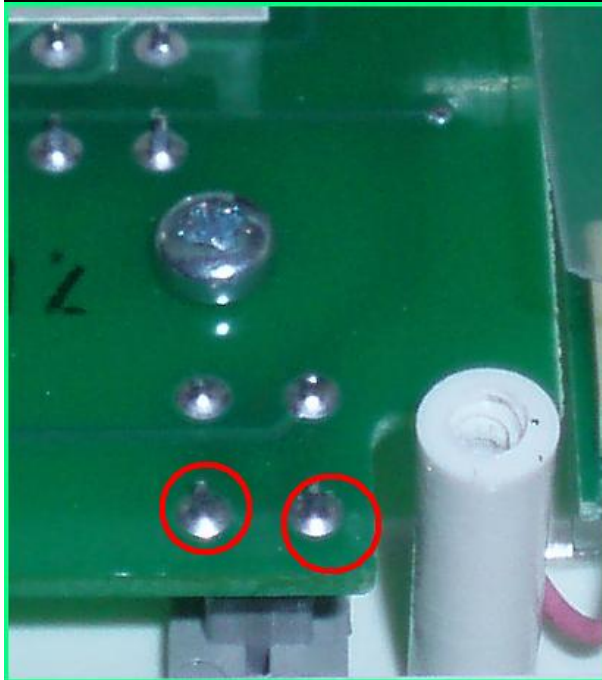
Remove the screws marked with red circles (6 pcs), then those marked with blue circles (3 pcs).



Carefully lift the green PCB and remove the connector marked with circle.

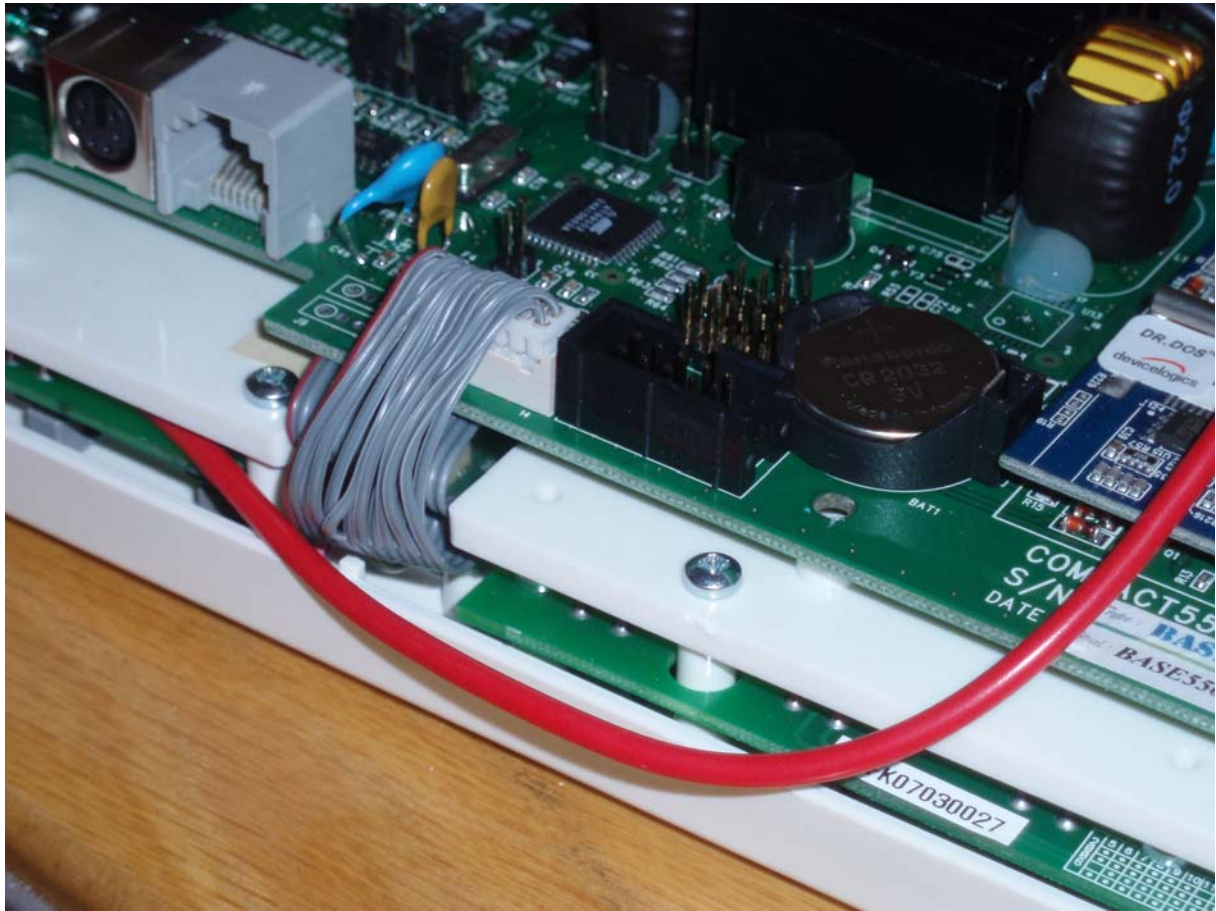


Flip the PCB as pictured and remove the 6 screws marked with red, then the connectors marked with yellow. Glide the white plastic panel up a bit, until the PCB under the white panel is visible. It is enough if you have about 2 cm visible from the PCB.



You have to solder the wires to the points marked.

Remount the operation box in reverse order it was dismantled.



When the PCB is remounted, the cable should go like this.

When remounting the cover take care the cable is not blocking the cooling fan!

Finally remount the floppy drive and the operation box to the machine.